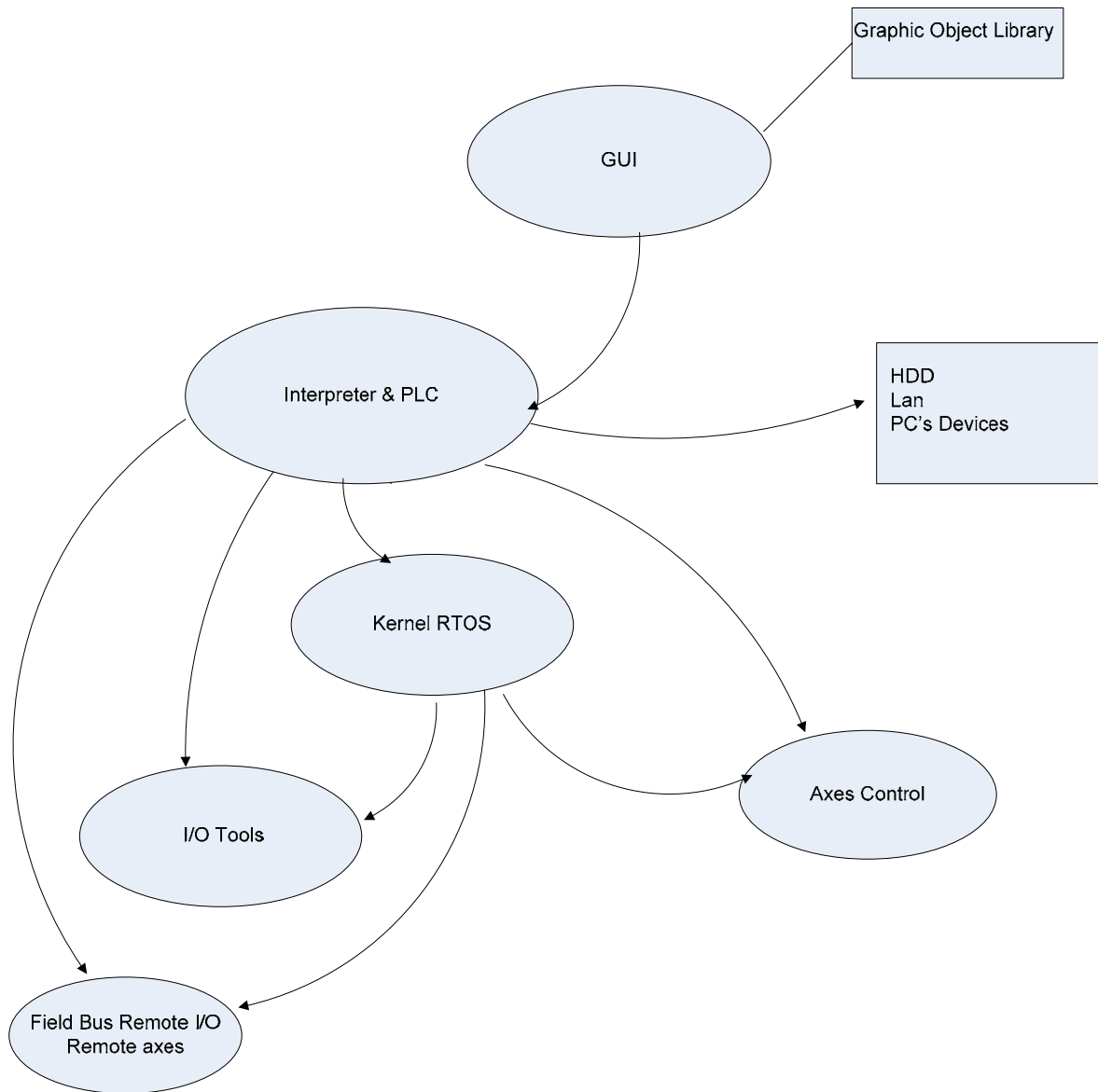


EasyAuto Graphic language for Automation applications:

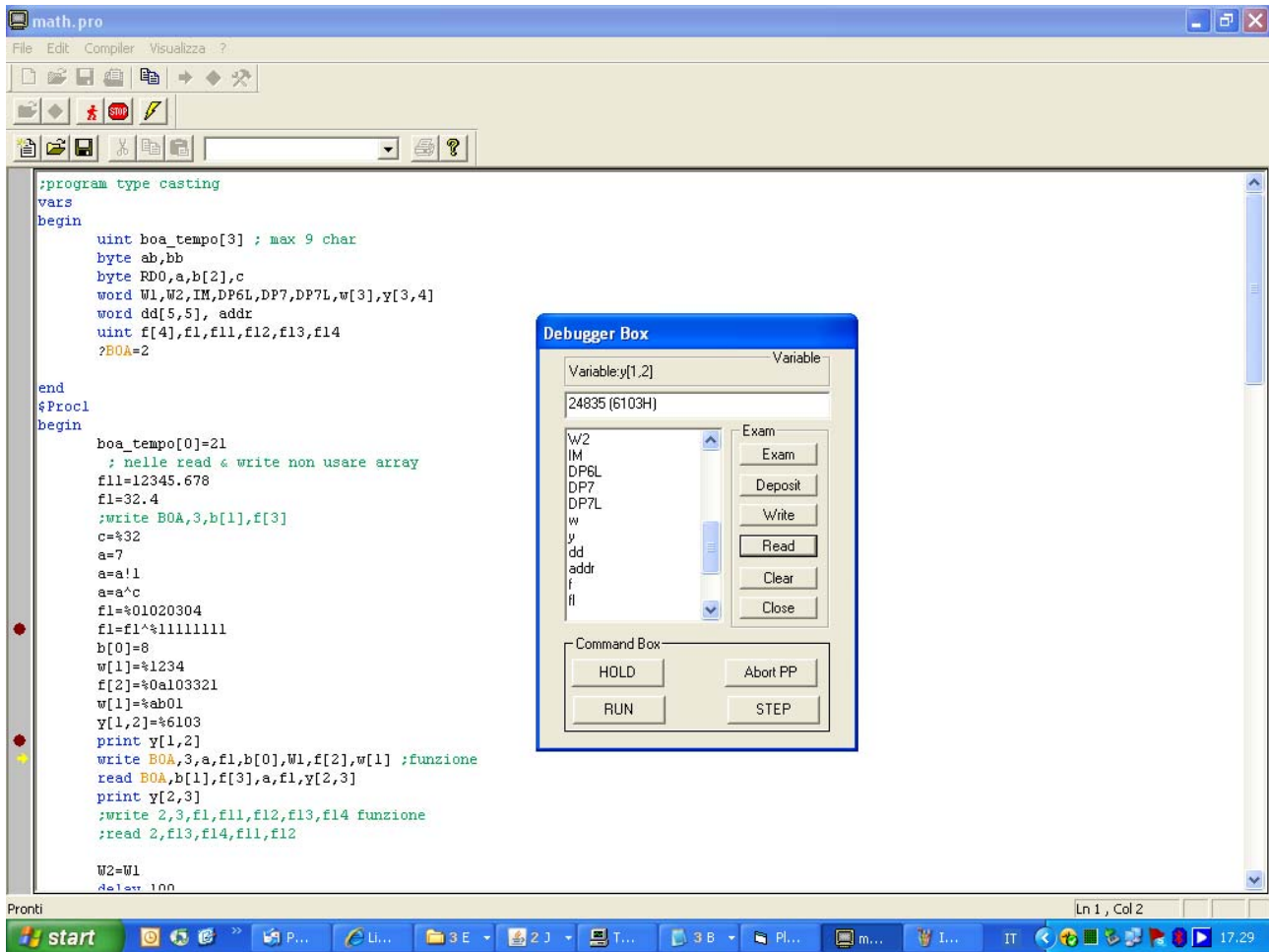
- Developed for Windows and/or Windows embedded platform.
- Possibility of to develop real time cycle trough RTOS also on Windows platform
- Possibility of to build the owner user interface (GUI)
- PC's devices access
- Tools handling or PLC connection trough field bus (CAN, DeviceNet , Profibus)
- Axes control handling through owner deterministic network



- Interpreter with process structured language
- Sequential description of tooling and axes motion cycles
- “Ladder like” language PLC
- Synchronization control of processes
- Modern IDE with Break Point, Step , Exam Variables (etc.) features
- Structured language with IF, FOR, WHILE statements
- Axes control handling

IDE features:

- Editor
- Compiler
- Linker
- Application User Debug Tool
- User PLC .Integration



User PLC:

- Possibility of to build a personalized GUI
- Synchronization with interpreter processes
- Very strong object oriented language with the OCX import feature and possibility of to built new OCX's for other applications
- Possibility of to run the application on the remote target
- Possibility of to build Plug-in and Devices driver used for to interface any device

The screenshot displays the 'Plc User' application window. The interface is divided into several functional areas:

- Quote Macchina:** A panel on the left showing machine coordinates: X= 236,81, Y= 229,041, Z= 0, and R= 0.
- Messaggi Operatore:** A message log on the left listing tasks such as 'Programma non caricato' and 'Controllare Pressione Aria'.
- Posizionatore:** A large central area with a red vertical bar and a yellow horizontal bar, representing a positioning mechanism.
- Pannello Funzioni:** A control panel with fields for 'MISURE' (H and L), 'N° LOTTO' (with an 'inserito' checkbox), and 'Pezzi Banco' (with 'Origine 1' and 'Origine 2' checkboxes). It includes buttons for 'Esegui Lotto', 'MUSHROOM', and 'Halt'.
- Pannello di Controllo:** A control panel at the bottom with buttons for 'AUTO', 'IOBOX', 'Speed', 'Run', 'Hold', 'Zero', 'Quote', 'Funzioni', and 'Ripari' (with a green indicator).
- Potenza:** A power control panel on the right with a blue 'MOTOR ON' button and a yellow 'EME' button.
- PP PlcVel:** A panel with 'Abort PP' and 'Load' buttons, and a green indicator light.

The Windows taskbar at the bottom shows the 'start' button, open applications (RbxServer, Debug, Plc User), and system tray icons (IT, 10.37).